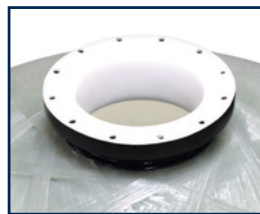




AT SERIES

PRESSURE TANKS



Operating Parameters:	
Maximum Operating Pressure:	150 psi (10.5 bar)
Maximum Operating Temperature:	120 °F (49 °C)

Warranty:	
10 Year Warranty for:	6" - 13" vessels
5 Year Warranty for:	14" - 63" vessels

* For complete installation and handling instructions, please visit:
https://aquatroltech.com/dl/manuals/AT_Tanks_Manual.pdf

DESIGN PARAMETERS

- Cycle Test
- Safety Factor

SAFETY FACTORS

- 100,000 Cycle Test without leaks
- Safety Factor
4:1 (Minimum burst at 600 psi)



Certified to
 NSF/ANSI Standard 61 for
 materials requirements only.

COMPONENT

Distributed by: **H₂O International Inc.**



3001 S.W. 15th Street, Suite C, Deerfield Beach, FL 33442
 sales@h2ofilter.com • www.h2ofilter.com

Toll-Free Number: 1-800-570-3464

International: 1-954-570-3464

Manufactured by Hydronix Water Technology

Size	Part Number	SIZE (DIAMETER X HEIGHT)		CHARACTERISTICS		TOTAL VOLUME		CAPACITY (MEDIA) [†]
		Inches	Millimeters	Connection	Color	Gallons	Liters	Ft ³
6"	AT-0618BL-25T	6 x 18	152 x 457	2.5" T	Blue	1.8	6.8	0.30
	AT-0713BL-25T	7 x 13	177 x 330	2.5" T	Blue	1.9	7.2	0.15
7"	AT-0713BK-25T	7 x 13	177 x 330	2.5" T	Black	1.9	7.2	0.15
	AT-0717BK-25T	7 x 17	177 x 431	2.5" T	Black	2.5	9.5	0.30
	AT-0717BL-25T	7 x 17	177 x 431	2.5" T	Blue	2.5	9.5	0.30
	AT-0735BL-25T	7 x 35	177 x 889	2.5" T	Blue	5.2	19.7	0.50
	AT-0744BL-25T	7 x 44	177 x 1117	2.5" T	Blue	6.4	24.2	0.60
	AT-0817BL-25T	8 x 17	203 x 431	2.5" T	Blue	2.9	11.0	0.33
8"	AT-0835BL-25T	8 x 35	203 x 889	2.5" T	Blue	6.6	25.0	0.55
	AT-0844BL-25T	8 x 44	203 x 1117	2.5" T	Blue	8.7	32.9	0.75
	AT-0844BK-25T	8 x 44	203 x 1117	2.5" T	Black	8.7	32.9	0.75
9"	AT-0935BL-25T	9 x 35	228 x 889	2.5" T	Blue	8.3	31.4	0.80
	AT-0948BL-25T	9 x 48	228 x 1219	2.5" T	Blue	12.7	48.1	1.00
	AT-0948BK-25T	9 x 48	228 x 1219	2.5" T	Black	12.7	48.1	1.00
10"	AT-1017BL-25T	10 x 17	254 x 431	2.5" T	Blue	4.4	16.7	0.50
	AT-1017BK-25T	10 x 17	254 x 431	2.5" T	Black	4.4	16.7	0.50
	AT-1035BK-25T	10 x 35	254 x 889	2.5" T	Black	10.2	38.6	0.75
	AT-1035BL-25T	10 x 35	254 x 889	2.5" T	Blue	10.2	38.6	0.75
	AT-1044BL-25T	10 x 44	254 x 1117	2.5" T	Blue	13.1	49.6	1.00
	AT-1054BK-25T	10 x 54	254 x 1371	2.5" T	Black	16.4	62.1	1.50
	AT-1054BL-25T	10 x 54	254 x 1371	2.5" T	Blue	16.4	62.1	1.50
12"	AT-1248BL-25T	12 x 48	304 x 1219	2.5" T	Blue	21.0	79.5	1.60
	AT-1252BL-25T	12 x 52	304 x 1320	2.5" T	Blue	22.2	84.0	1.75
	AT-1252BK-25T	12 x 52	304 x 1320	2.5" T	Black	22.2	84.0	1.75
	AT-1265BL-25T	12 x 65	304 x 1651	2.5" T	Blue	28.0	106.0	1.85
13"	AT-1354BL-25T	13 x 54	330 x 1371	2.5" T	Blue	27.5	104.1	2.00
	AT-1354BK-25T	13 x 54	330 x 1371	2.5" T	Black	27.5	104.1	2.00
14"	AT-1465BL-25T	14 x 65	355 x 1651	2.5" T	Blue	40.6	153.7	3.00
	AT-1465BK-25T	14 x 65	355 x 1651	2.5" T	Black	40.6	153.7	3.00
	AT-1465BL-4T	14 x 65	355 x 1651	4" T	Blue	40.6	153.7	3.00
16"	AT-1665BL-25T	16 x 65	406 x 1651	2.5" T	Blue	49.0	185.5	4.00
	AT-1665BK-25T	16 x 65	406 x 1651	2.5" T	Black	49.0	185.5	4.00
	AT-1665BL-4T	16 x 65	406 x 1651	4" T	Blue	49.0	185.5	4.00
	AT-1665NA-4T4B	16 x 65	406 x 1651	4" T 4" B	Natural	49.0	185.5	4.00
18"	AT-1865NA-4T	18 x 65	457 x 1651	4" T	Natural	66.7	252.5	5.00
	AT-1865NA-4T4B	18 x 65	457 x 1651	4" T 4" B	Natural	66.7	252.5	5.00
21"	AT-2162NA-4T	21 x 62	533 x 1574	4" T	Natural	88.0	333.1	7.00
	AT-2162NA-4T4B	21 x 62	533 x 1574	4" T 4" B	Natural	88.0	333.1	7.00
24"	AT-2472NA-4T	24 x 72	609 x 1828	4" T	Natural	126.8	479.9	10.00
	AT-2472NA-4T4B	24 x 72	609 x 1828	4" T 4" B	Natural	126.8	479.9	10.00
30"	AT-3072NA-4T	30 x 72	762 x 1828	4" T	Natural	195.5	740.0	15.00
	AT-3072NA-4T4B	30 x 72	762 x 1828	4" T 4" B	Natural	195.5	740.0	15.00
36"	AT-3672NA-4T	36 x 72	914 x 1828	4" T	Natural	283.0	1071.2	20.00
	AT-3672NA-4T4B	36 x 72	914 x 1828	4" T 4" B	Natural	283.0	1071.2	20.00
	AT-3672NA-6T6B	36 x 72	914 x 1828	6" T 6" B	Natural	283.0	1071.2	20.00
	AT-3694NA-6T6B	36 x 94	914 x 2388	6" T 6" B	Natural	318.0	1203.6	30.00
42"	AT-4272NA-6T6B	42 x 72	1066 x 1828	6" T 6" B	Natural	290.6	1099.9	30.00
48"	AT-4872NA-6T6B	48 x 72	1219 x 1828	6" T 6" B	Natural	477.7	1808.1	40.00
	AT-4894NA-6T6B	48 x 94	1219 x 2387	6" T 6" B	Natural	657.1	2487.1	40.00
60"	AT-6094NA-6T6B	60 x 94	1524 x 2387	6" T 6" B	Natural	710.2	2688.1	60.00
	AT-60110NA-6T6B	60 x 110	1524 x 2794	6" T 6" B	Natural	896.2	3392.1	75.00
63"	AT-6370NA-6T6B	63 x 70	1600 x 1778	6" T 6" B	Natural	687.0	2600.3	60.00
	AT-6383NA-6T6B	63 x 83	1600 x 2108	6" T 6" B	Natural	832.3	3150.3	70.00

† The listed resin volume are nominal values and are subject to change based on user preference and experience.



LIT-AT-DS 08/06/20

Distributed by: H₂O International Inc.



3001 S.W. 15th Street, Suite C, Deerfield Beach, FL 33442
 sales@h2ofilter.com • www.h2ofilter.com
Toll-Free Number: 1-800-570-3464
International: 1-954-570-3464

Manufactured by Hydronix Water Technology

Colors Options: BK - Black 
 NA - Natural 
 BL - Blue 